

Power Meter

instruction manual

Power Meter is a monitoring and testing instrument which determines the power consumption of a connected appliance and the cost of the electricity consumed

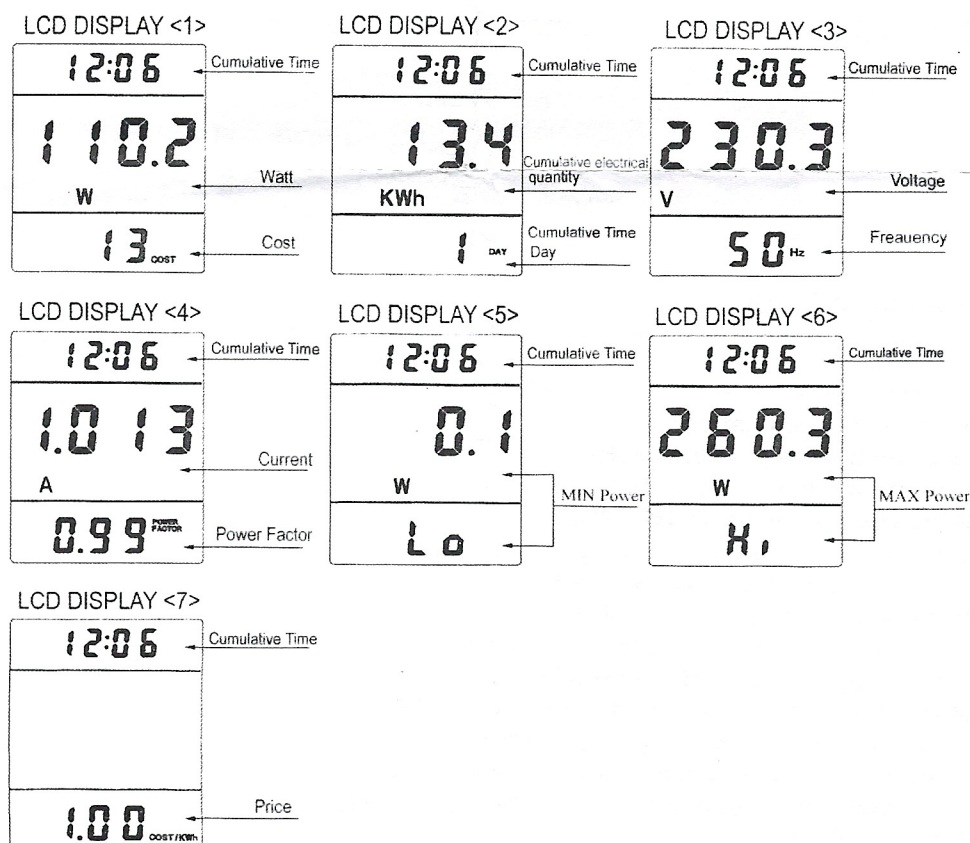
Resetting

If an abnormal display appears or the buttons produce no response, the instrument must be reset, To do this, press the RESET button

Display Mode

1. Entire LCD can be displayed for about 1 minute and then it automatically gets into LCD DISPLAY<1>, To transfer from on mode to the other, press the FUNCTION button, LCD DISPLAY<1>-----LCD DISPLAY<7>

2. The first row shows the cumulative timer: Display duration (how long) this device connect to power source. LCD on first line shows 0:00 with first two figures mean minutes(2 figures will occur while occur at 10min) and the rest shows seconds. After 60mins, it displays 0:00 again with first two numbers means hour(2 figures will occur after 10hours)and the rest shows minutes . The cycle repeats in the same manner after 24 hours.

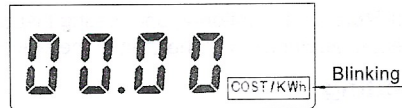


Overload Display:

When the power socket connects the load over 3680W, LCD on second line displays the "OVERLOAD" with booming noise to warn the users(selectable choice)

Electricity prices Set

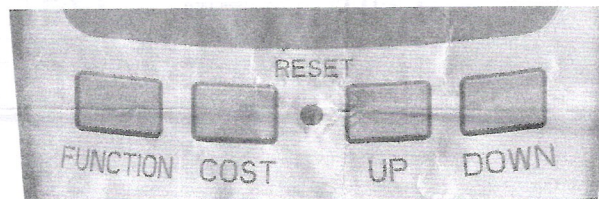
1. After keeping COST button pressed lasting more than 3 seconds (LCD on third line display system defaults Price, eg 0.00COST/KWH).



2. The rendered content begins moving up and down which means that the device has entered the setting mode. Then press FUNCTION button to change selection and press UP/DOWN to set what you want. (On pressing once, the figure after demical point will increase or decrease accordingly. On pressing and hold-on, figures after demical point will increase or decrease slowly in 2 seconds while figures change quickly when hold on time exceeds 2 seconds. When hold-on time reaches 10 seconds or more, the figures after demical point will stop while the figures before demical point begin to increasing or decreasing.) After that, press FUNCTION for switching, then press "UP" and "DOWN" button again to set value which ranges in 00.00COST/KWH-99.99COST/KWH. After setting all above, press COST to return to LCD DISPLAY<7> or it will automatically return to LCD DISPLAY<7> without any pressing after setting with data storage.

3. Press COST button down LCD display Electricity prices

Built in 3.6V rechargeable Batteries(NI-MH) for saving data



Backlight Mode:

Connect to AC power, backlight immediately light, if not press any button, backlight will went off in 15 seconds. When press any of the buttons, backlight start light again. (Backlight only light when it connect to AC power, backlight cannot light if use battery)

Technical specification:

Operating voltage: 230V, 50HZ

Operating current: max 16A

Wide voltage range: 200V----250V

Timing display range: 0second----9999days

Wattage display (watts): 0W----9999W

Voltage Display range: 0V----9999V

Current Display (amps): 0.000A----16.000A

Frequency Display: 0Hz----9999Hz

Minimum Wattage display range: 0W----9999W

Maximum Wattage display range: 0W----9999W

Price display range: 0.00€/KWH----99.99€/KWH

Total KWH and cost display: 0.00KWH----9999KWH
0.00€ ----99.99€